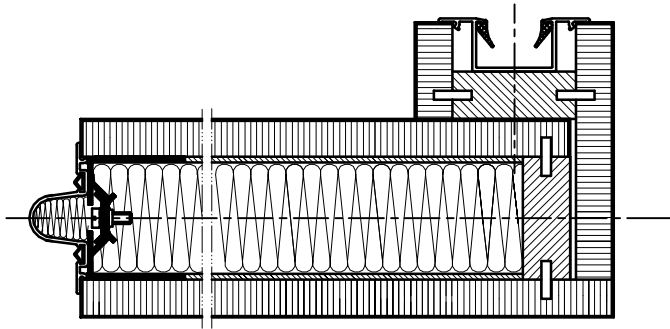
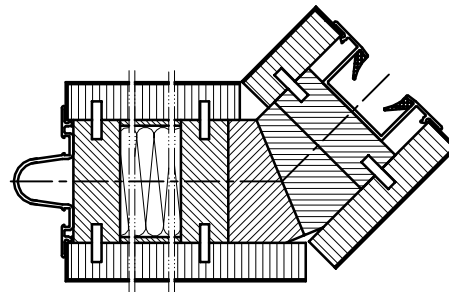


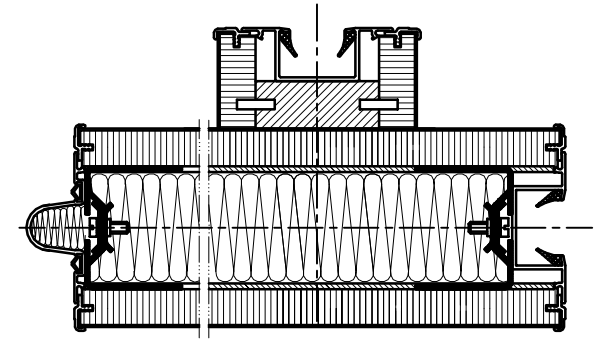
CORNER - POST PANELS & GLAZED PANELS - Type 100



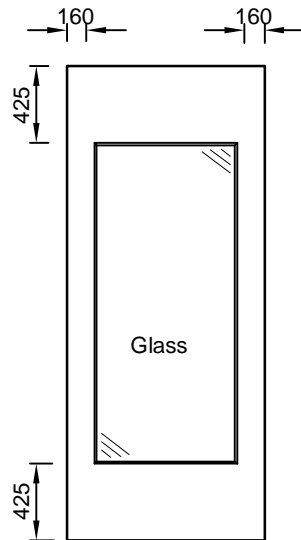
1. 90° Corner panel (EE)



2. 45° Corner panel (EE)

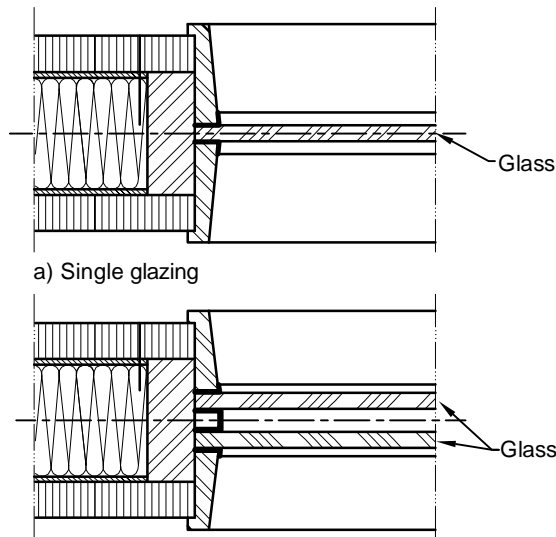


3. 'Tee' - post panel



Type 100M

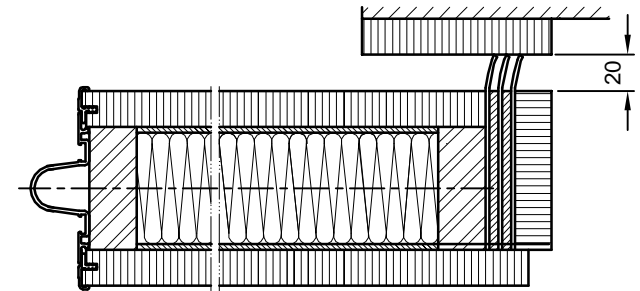
4. Max glazing - elevations



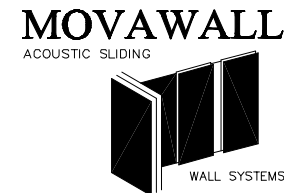
a) Single glazing

b) Double glazing

5. Vertical section A-A



6. Overlap panel (LE)



MOVAWALL SYSTEMS LTD
 63 BARWELL BUSINESS PARK
 LEATHERHEAD ROAD
 CHESSINGTON
 SURREY
 KT9 2NY
 TELEPHONE: +44 (0) 20 8391 8790
 FAX: +44 (0) 20 8391 8791
 EMAIL: info@movawall.co.uk

DRG. NO.: SL - 105