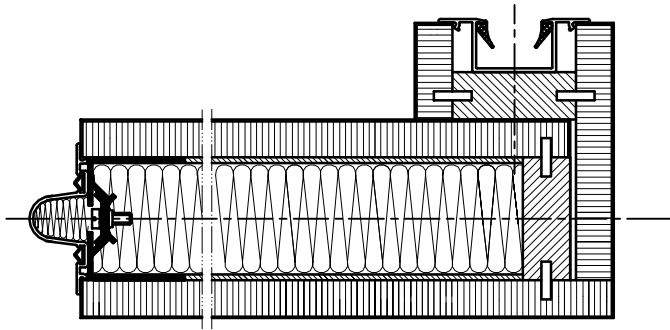
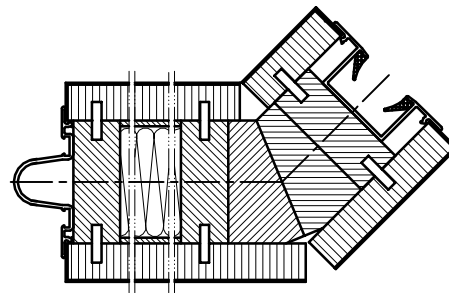


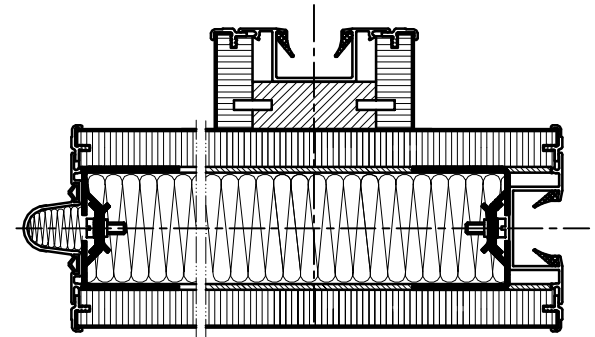
CORNER - POST PANELS & GLAZED PANELS - Type 100



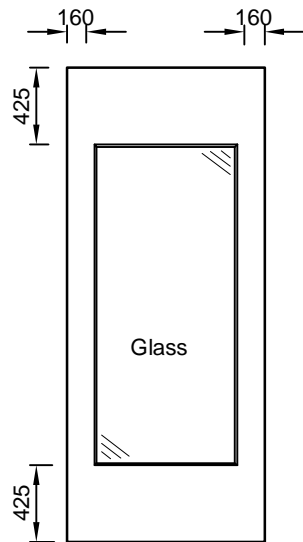
1. 90° Corner panel (EE)



2. 45° Corner panel (EE)

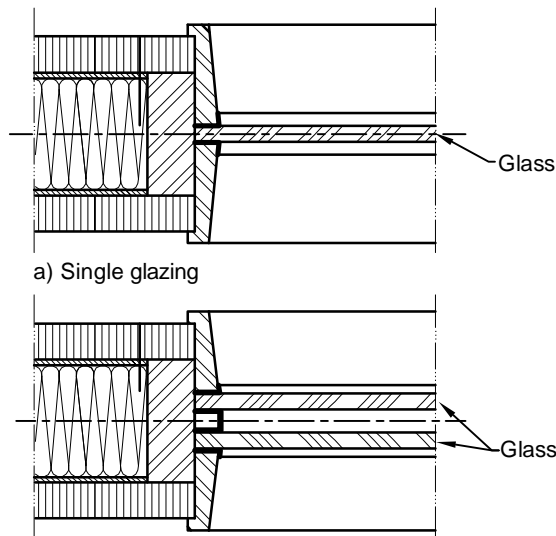


3. 'Tee' - post panel



Type 100M

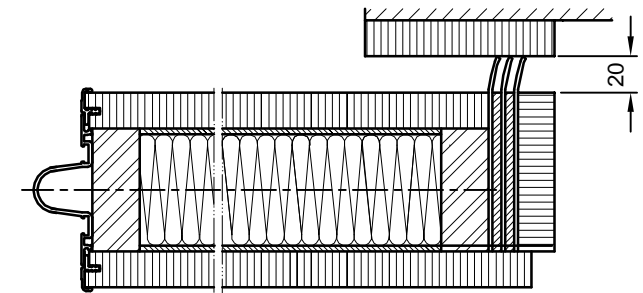
4. Max glazing - elevations



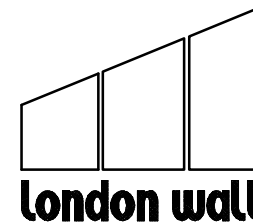
a) Single glazing

b) Double glazing

5. Vertical section A-A



6. Overlap panel (LE)



London Wall Design Ltd

63 Barwell Business Park
 Leatherhead Road
 Chessington, Surrey KT9 2NY
 Tel : +44 (0) 20 8391 8750
 Fax : + 44 (0) 20 8391 8751
 E-Mail : Sales@londonwall.co.uk

DRG. NO.: SL - 105